



# Deep Cycle Long Life series

Datasheet : NTD6-225(6V225AH)

<b>Nominal Voltage</b>	6V
<b>Number of cell</b>	3
<b>Design Life</b>	12 years
<b>Nominal Capacity 77°F(25°C)</b>	
10 hour rate (22.50A, 5.4V)	225.0Ah
5 hour rate (39.2A, 5.25V)	196.0Ah
1 hour rate (147A, 4.8V)	147.0Ah
<b>Internal Resistance</b>	
Fully Charged battery 77°F(25°C)	≤3.20mOhms
<b>Self-Discharge</b>	
3% of capacity declined per month at 20°C(average)	
<b>Operating Temperature Range</b>	
Discharge	-20~60°C
Charge	-10~60°C
Storage	-20~60°C
<b>Max. Discharge Current 77°F(25°C)</b>	1000(5s)
<b>Short Circuit Current</b>	3800A
<b>Charge Methods: Constant Voltage Charge 77°F(25°C)</b>	
<b>Cycle use</b>	2.40-2.45VPC
<b>Maximum charging current</b>	67.5A
<b>Temperature compensation</b>	-30mV/°C
<b>Standby use</b>	6.6-6.9V
<b>Temperature compensation</b>	-20mV/°C

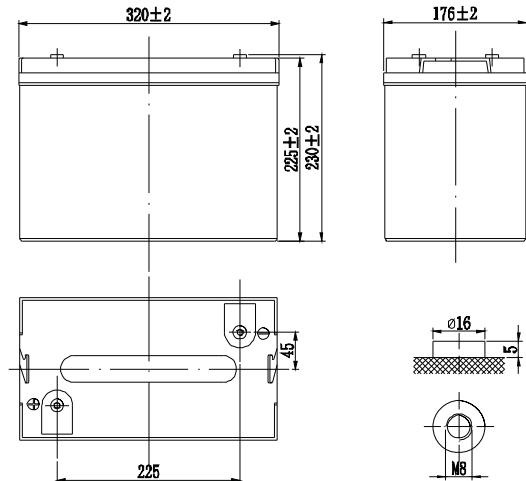


Wide Range Temperature	Warranty	Maintenance Free
Deep cycle Technology	easy use	long life

## Mechanical Characteristics

Length(mm / inch)	320 / 12.7
Width(mm / inch)	176 / 7.0
Height(mm / inch)	225 / 8.93
Total Height(mm / inch)	230 / 9.12
Approx. Weight(Kg / lbs)	33 / 72.6

\* Weight deviation: ± 3%



## Technical Characteristics

### Discharge Constant Current (Amperes at 77°F25°C)

End Point	Volts/Cell	5min	10min	15min	30min	1h	3h	5h	10h	20h
1.60V	--	--	--	224	147	58.8	41.2	23.0	11.9	
1.65V	--	--	--	217	144	57.6	40.7	22.9	11.8	
1.70V	--	--	--	209	141	56.4	40.0	22.8	11.7	
1.75V	--	--	--	200	138	55.2	39.2	22.7	11.6	
1.80V	--	--	--	192	134	53.6	38.3	22.5	11.5	

### Discharge Constant Power (Watts at 77°F25°C)

End Point	Volts/Cell	5min	10min	15min	30min	45min	1h	2h	3h	5h
1.60V	--	--	--	435	320	273	162	114	80.1	
1.65V	--	--	--	419	315	269	159	113	79.5	
1.70V	--	--	--	405	309	263	155	111	78.9	
1.75V	--	--	--	388	302	258	152	110	78.9	
1.80V	--	--	--	372	296	252	147	108	78.3	

(Note)The above characteristics data are average values obtained within three charge/discharge cycles. All data shall be changed without notice, Neata reserves the right to explain and update the information.

**SHENZHEN OFFICE (CHINA)**  
 Tel: +86-755-2691-9474  
 Fax: +86-755-2691-9474

Recognized under CE/ IEC and certified by ISO9001 ,14001

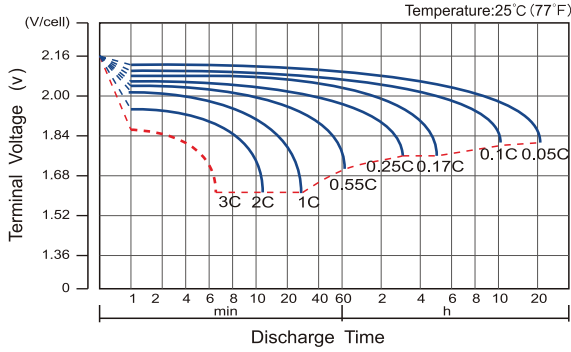


# Neata<sup>®</sup> Deep Cycle Long Life series

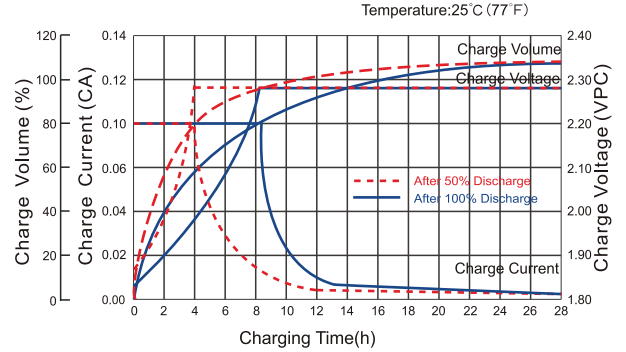
Datasheet : NTD6-225(6V225AH)

+ Super energy

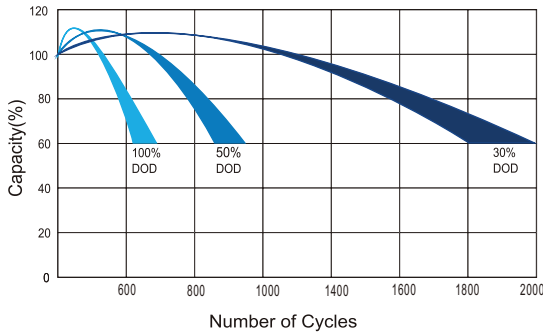
### Discharge Characteristics Curve



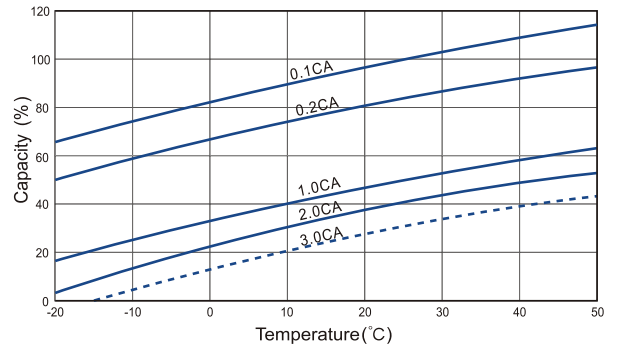
### Charge Characteristic Curve For Standby Use



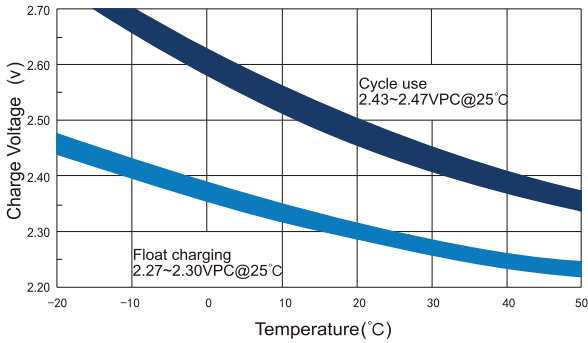
### Cycle Life In Relation To Depth Of Discharge



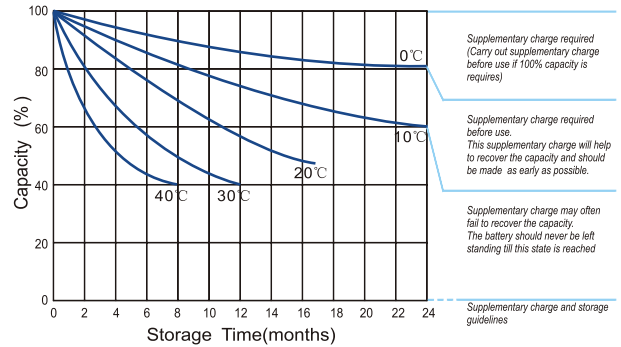
### Temperature Effects On Capacity



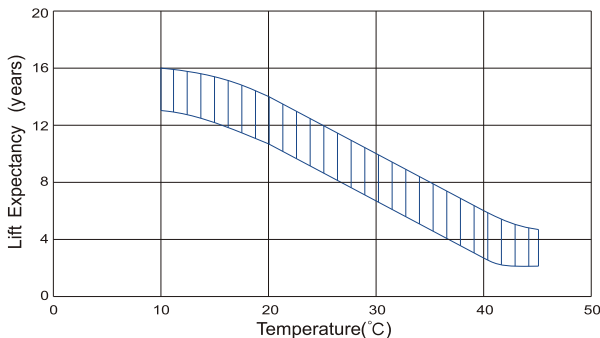
### Relationship Between Charging Voltage And Temperature



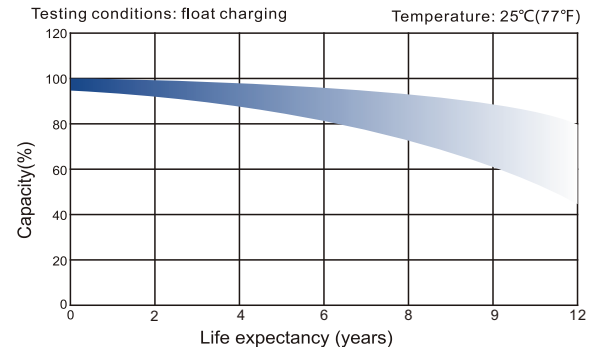
### Storage Characteristics



### Effect Of Temperature On Long Term Life



### Life Characteristics Of Standby Use



SHENZHEN OFFICE (CHINA)  
Tel: +86-755-2691-9474  
Fax: +86-755-2691-9474

Recognized under CE/IEC and certified by ISO9001,14001

