



# Deep Cycle Long Life series

Datasheet : NTD12-9(12V9AH)

<b>Nominal Voltage</b>	12V
<b>Number of cell</b>	6
<b>Design Life</b>	12 years
<b>Nominal Capacity 77°F(25°C)</b>	
20 hour rate (0.45A, 10.5V)	9.00Ah
10 hour rate (0.82A, 10.5V)	8.20Ah
5 hour rate (1.54A, 10.5V)	7.70Ah
1 hour rate (5.80A, 9.6V)	5.80Ah
<b>Internal Resistance</b>	
Fully Charged battery 77°F(25°C)	≤18mOhms
<b>Self-Discharge</b>	
3% of capacity declined per month at 20°C(average)	
<b>Operating Temperature Range</b>	
Discharge	-20~60°C
Charge	-10~60°C
Storage	-20~60°C
<b>Max. Discharge Current 77°F(25°C)</b>	200A(5s)
<b>Short Circuit Current</b>	450A
<b>Charge Methods: Constant Voltage Charge 77°F(25°C)</b>	
Cycle use	2.40-2.45VPC
<b>Maximum charging current</b>	3.60A
<b>Temperature compensation</b>	-30mV/°C
<b>Standby use</b>	2.23-2.30VPC
<b>Temperature compensation</b>	-20mV/°C





Wide Range Temperature



Warranty



Maintenance Free



Deep cycle Technology



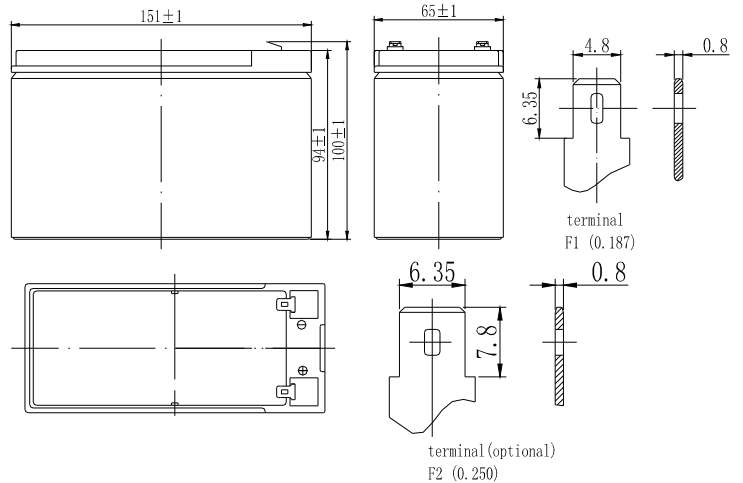
easy use



long life

## Mechanical Characteristics

Length(mm / inch)	151 / 5.94
Width(mm / inch)	65 / 2.56
Height(mm / inch)	94 / 3.70
Total Height(mm / inch)	99 / 3.90
Approx. Weight(Kg / lbs)	2.60 / 5.72



## Technical Characteristics

### Discharge Constant Current (Amperes at 77°F25°C)

End Point	Volts/Cell	2min	5min	10min	15min	30min	1h	5h	10h	20h
1.60V	70.0	41.0	24.2	18.0	9.90	5.80	1.60	0.87	0.47	
1.65V	63.0	39.0	23.6	17.5	9.79	5.75	1.56	0.86	0.46	
1.70V	59.8	38.7	22.9	16.1	9.36	5.71	1.55	0.84	0.46	
1.75V	54.8	36.4	22.1	14.6	8.91	5.66	1.54	0.82	0.45	
1.80V	48.7	33.2	21.0	13.9	8.45	5.51	1.53	0.82	0.44	

### Discharge Constant Power (Watts at 77°F25°C)

End Point	Volts/Cell	2min	5min	10min	15min	30min	1h	2h	3h	5h
1.60V	118.3	76.6	49.3	37.3	22.1	12.8	6.30	4.34	3.10	
1.65V	112.1	73.6	48.3	36.8	21.9	12.7	6.23	4.29	3.04	
1.70V	108.3	72.5	48.0	36.6	21.8	12.6	6.08	4.20	2.98	
1.75V	100.8	69.0	46.6	35.8	21.6	12.5	5.94	4.08	2.92	
1.80V	92.5	64.5	44.3	34.5	21.2	12.4	5.77	3.92	2.85	

(Note)The above characteristics data are average values obtained within three charge/discharge cycles. All data shall be changed without notice, Neata reserves the right to explain and update the information.

**SHENZHEN OFFICE (CHINA)**  
 Tel: +86-755-2691-9474  
 Fax: +86-755-2691-9474

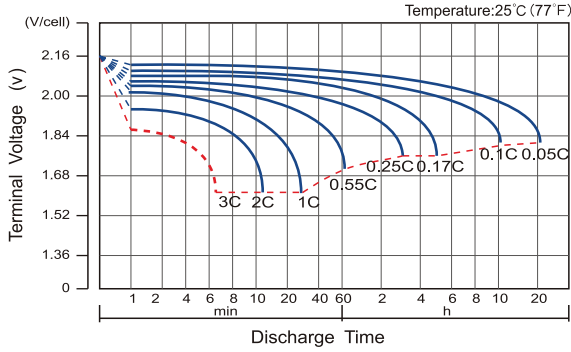
Recognized under CE/IEC and certified by ISO9001 ,14001



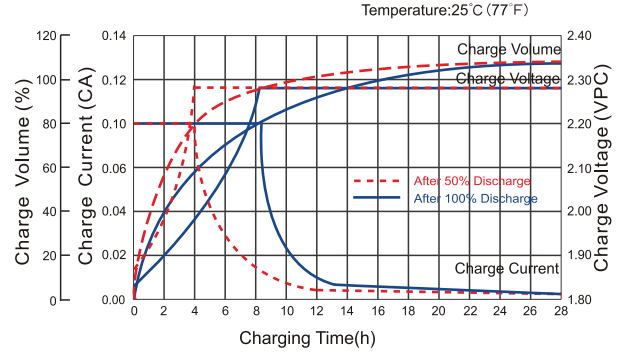
# Neata<sup>®</sup> Deep Cycle Long Life series

## Datasheet : NTD12-9(12V9AH)

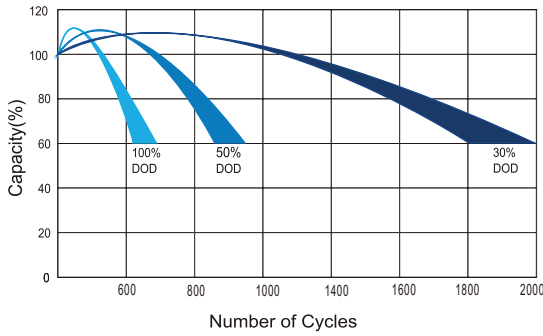
### Discharge Characteristics Curve



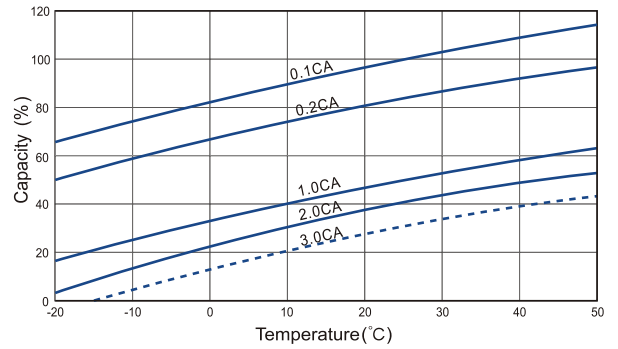
### Charge Characteristic Curve For Standby Use



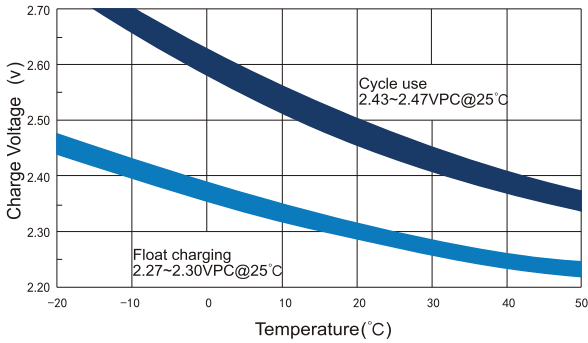
### Cycle Life In Relation To Depth Of Discharge



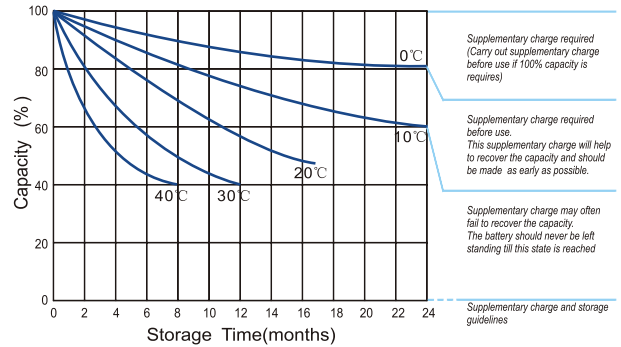
### Temperature Effects On Capacity



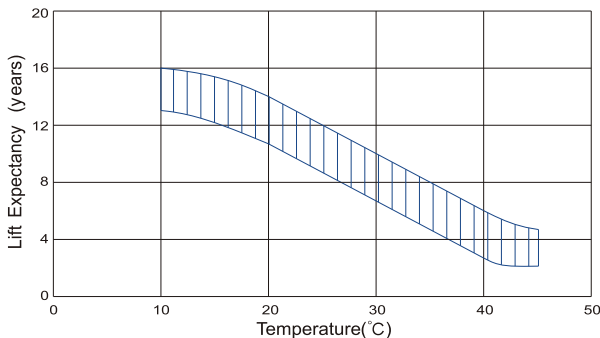
### Relationship Between Charging Voltage And Temperature



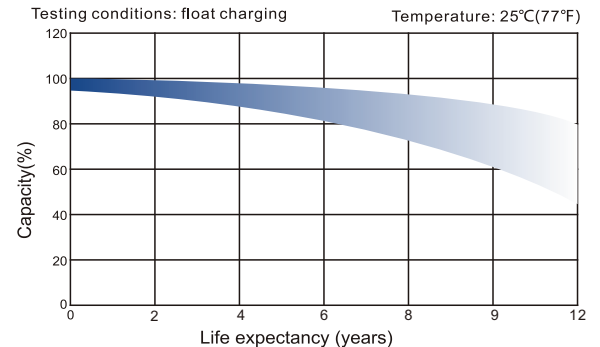
### Storage Characteristics



### Effect Of Temperature On Long Term Life



### Life Characteristics Of Standby Use



SHENZHEN OFFICE (CHINA)  
 Tel: +86-755-2691-9474  
 Fax: +86-755-2691-9474

Recognized under CE/IEC and certified by ISO9001,14001

