

# Neata<sup>®</sup>

+ Super energy

## Deep Cycle Long Life series

Datasheet : NTD12-150 (12V150AH)

<b>Nominal Voltage</b>	12V
<b>Number of cell</b>	6
<b>Design Life</b>	12 years
<b>Nominal Capacity 77°F(25°C)</b>	
20 hour rate (7.5A, 10.5V)	150Ah
10 hour rate (14.3A, 10.5V)	143Ah
5 hour rate (26.9A, 10.5V)	134.5Ah
1 hour rate (100.0A, 9.6V)	100Ah
<b>Internal Resistance</b>	
Fully Charged battery 77°F(25°C)	≤4.0mOhms
<b>Self-Discharge</b>	
3% of capacity declined per month at 20°C(average)	
<b>Operating Temperature Range</b>	
Discharge	-20~60°C
Charge	-10~60°C
Storage	-20~60°C
<b>Max. Discharge Current 77°F(25°C)</b>	1000(5s)
<b>Short Circuit Current</b>	2700A
<b>Charge Methods: Constant Voltage Charge 77°F(25°C)</b>	
Cycle use	2.40-2.45VPC
<b>Maximum charging current</b>	45.0
<b>Temperature compensation</b>	-30mV/°C
<b>Standby use</b>	13.6-13.8V
<b>Temperature compensation</b>	-20mV/°C



Wide Range Temperature



Warranty



Maintenance Free



Deep cycle Technology



easy use

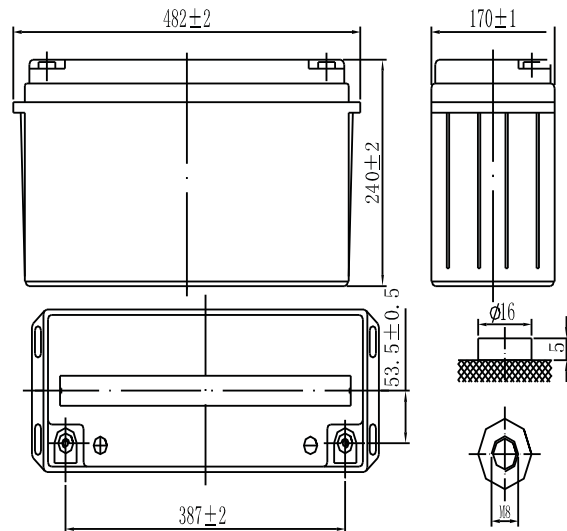


long life

### Mechanical Characteristics

Length(mm / inch)	482 / 19.1
Width(mm / inch)	170 / 6.74
Height(mm / inch)	240 / 9.49
Total Height(mm / inch)	240 / 9.49
Approx. Weight(Kg / lbs)	39.4 / 86.68

\* Weight deviation: ± 3%



### Technical Characteristics

#### Discharge Constant Current (Amperes at 77°F25°C)

End Point	Volts/Cell	10min	15min	30min	1h	3h	5h	10h	20h
1.60V	346	280	165	100	44.1	28.7	14.7	7.70	
1.65V	314	259	158	97.5	43.8	28.1	14.6	7.65	
1.70V	301	251	156	94.9	43.4	27.5	14.5	7.60	
1.75V	277	233	152	92.0	43.0	26.9	14.4	7.55	
1.80V	254	216	146	89.2	41.0	26.4	14.3	7.50	

#### Discharge Constant Power (Watts at 77°F25°C)

End Point	Volts/Cell	10min	15min	30min	45min	1h	2h	3h	5h
1.60V	613	526	325	238	189	110	83.7	55.1	
1.65V	590	489	297	230	183	108	83.1	53.8	
1.70V	544	455	293	225	178	107	82.5	52.9	
1.75V	512	431	287	220	174	105	81.3	51.8	
1.80V	479	413	282	217	172	103	80.0	50.7	

(Note)The above characteristics data are average values obtained within three charge/discharge cycles. All data shall be changed without notice, Neata reserves the right to explain and update the information.

**SHENZHEN OFFICE (CHINA)**  
Tel: +86-755-2691-9474  
Fax: +86-755-2691-9474

Recognized under CE/IEC and certified by ISO9001,14001

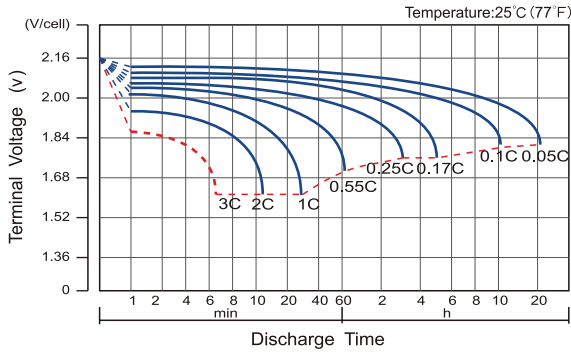


**Neata<sup>®</sup>** //Shenzhen Neata Power Tech co.,Ltd//www.neata-batt.com

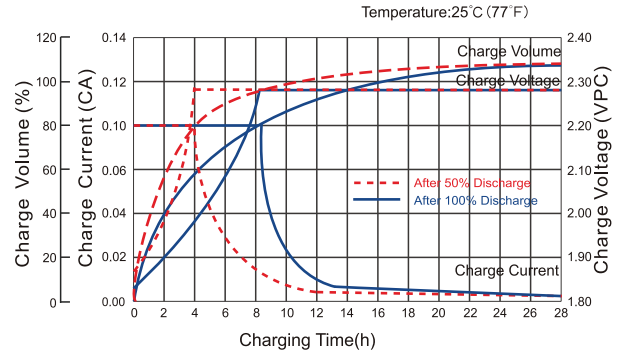
# Neata<sup>®</sup> Deep Cycle Long Life series

## Datasheet : NTD12-150 (12V150AH)

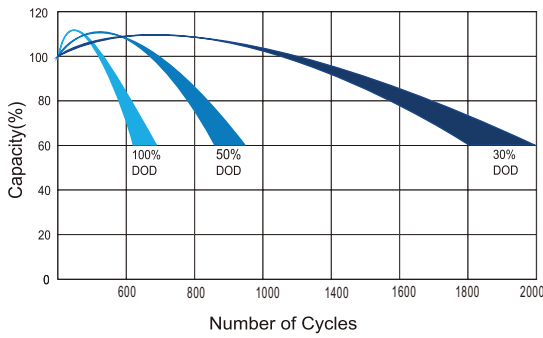
### Discharge Characteristics Curve



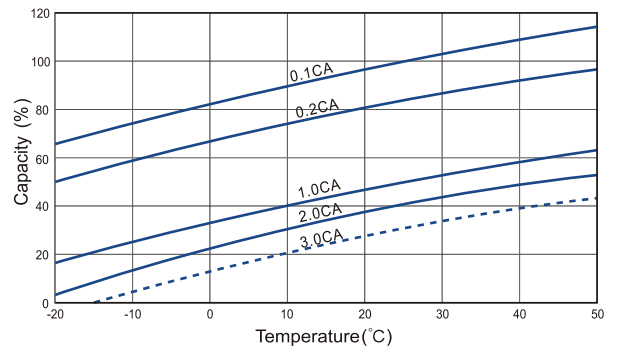
### Charge Characteristic Curve For Standby Use



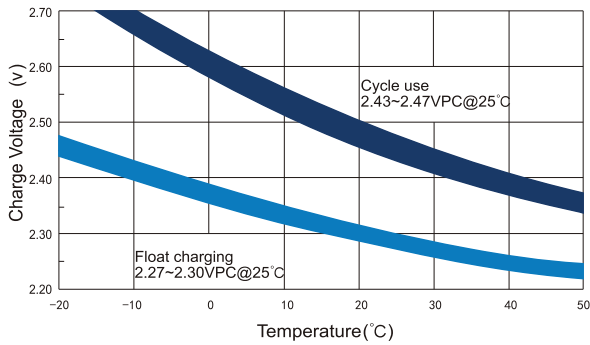
### Cycle Life In Relation To Depth Of Discharge



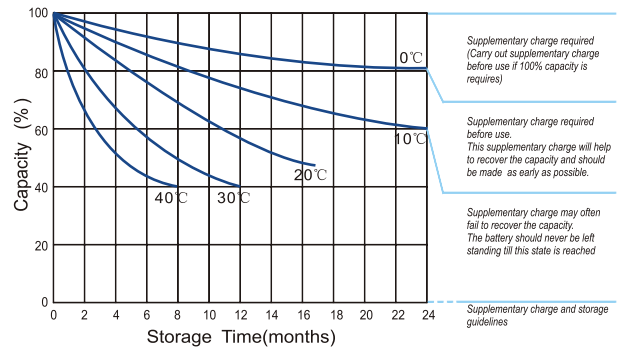
### Temperature Effects On Capacity



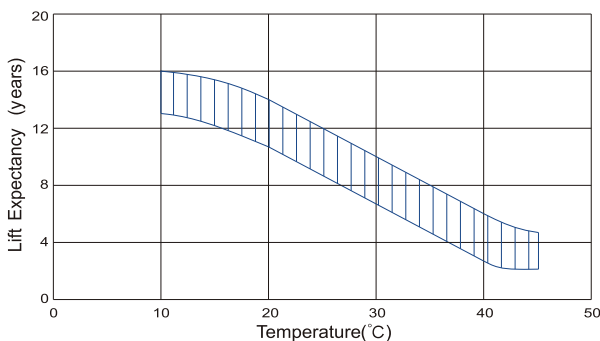
### Relationship Between Charging Voltage And Temperature



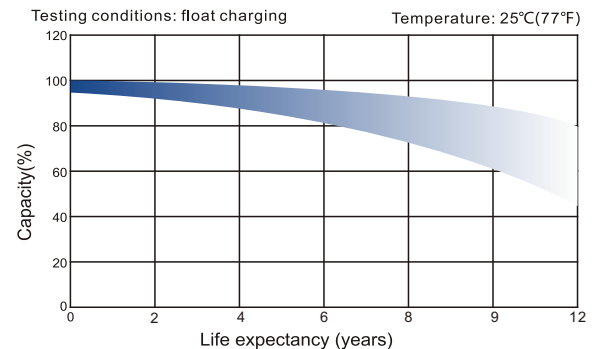
### Storage Characteristics



### Effect Of Temperature On Long Term Life



### Life Characteristics Of Standby Use



SHENZHEN OFFICE (CHINA)  
Tel: +86-755-2691-9474  
Fax: +86-755-2691-9474

Recognized under CE/IEC and certified by ISO9001,14001

