

# Neata<sup>®</sup>

+ Super energy

## Deep Cycle Long Life series

Datasheet : NTD12-200 (12V200AH)

Nominal Voltage	12V
Number of cell	6
Design Life	12 years
Nominal Capacity 77°F(25°C)	
20 hour rate (10.00A, 10.5V)	200Ah
10 hour rate (18.7A, 10.5V)	187Ah
5 hour rate (35.8A, 10.5V)	179Ah
1 hour rate (126.0A, 9.6V)	126Ah
Internal Resistance	
Fully Charged battery 77°F(25°C)	≤3.6mOhms
Self-Discharge	
3% of capacity declined per month at 20°C(average)	
Operating Temperature Range	
Discharge	-20~60°C
Charge	-10~60°C
Storage	-20~60°C
Max. Discharge Current 77°F(25°C)	1000(5s)
Short Circuit Current	3300A
Charge Methods: Constant Voltage Charge 77°F(25°C)	
Cycle use	2.40-2.45VPC
Maximum charging current	60A
Temperature compensation	-30mV/°C
Standby use	13.6-13.8V
Temperature compensation	-20mV/°C



Wide Range Temperature



Warranty



Maintenance Free



Deep cycle Technology



easy use

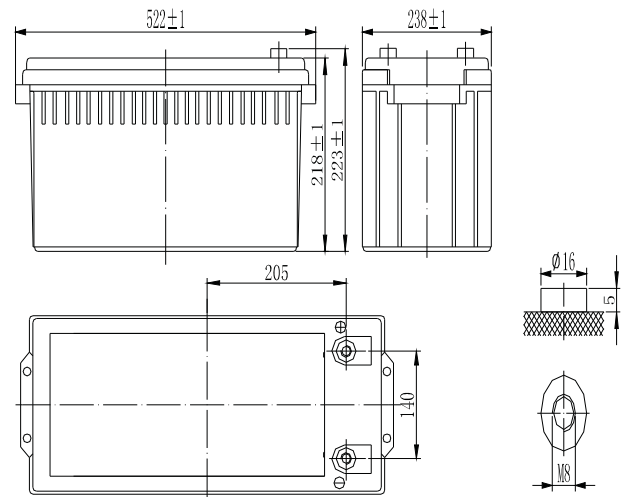


long life

### Mechanical Characteristics

Length(mm / inch)	522 / 20.6
Width(mm / inch)	238 / 9.45
Height(mm / inch)	218 / 8.65
Total Height(mm / inch)	223 / 9.53
Approx. Weight(Kg / lbs)	57.5/ 126.5

\* Weight deviation: ± 3%



### Technical Characteristics

#### Discharge Constant Current (Amperes at 77°F25°C)

End Point	Volts/Cell	10min	15min	30min	1h	3h	5h	10h	20h
1.60V	423	350	215	126	57.0	38.0	19.1	10.8	
1.65V	403	340	207	122	55.0	37.0	19.0	10.6	
1.70V	385	327	201	118	54.5	36.4	18.9	10.4	
1.75V	367	310	195	115	52.9	35.8	18.8	10.2	
1.80V	318	261	182	112	50.5	35.2	18.7	10.0	

#### Discharge Constant Power (Watts at 77°F25°C)

End Point	Volts/Cell	10min	15min	30min	45min	1h	2h	3h	5h
1.60V	727	607	392	288	227	137	108	72.6	
1.65V	701	586	380	280	222	135	106	71.6	
1.70V	677	569	373	274	218	132	104	70.8	
1.75V	653	561	363	269	214	128	100	69.9	
1.80V	619	538	355	265	212	125	97.0	69.0	

(Note)The above characteristics data are average values obtained within three charge/discharge cycles. All data shall be changed without notice, Neata reserves the right to explain and update the information.

**SHENZHEN OFFICE (CHINA)**  
Tel: +86-755-2691-9474  
Fax: +86-755-2691-9474

Recognized under CE/IEC and certified by ISO9001,14001

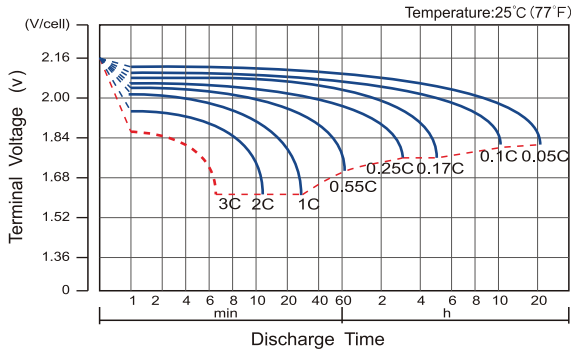


**Neata<sup>®</sup>** //Shenzhen Neata Power Tech co.,Ltd//www.neata-batt.com

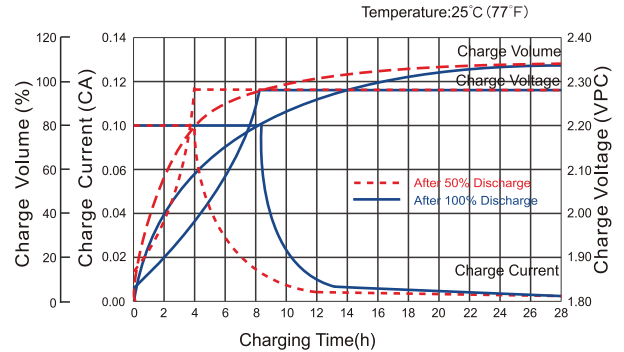
# Neata<sup>®</sup> Deep Cycle Long Life series

## Datasheet : NTD12-200 (12V200AH)

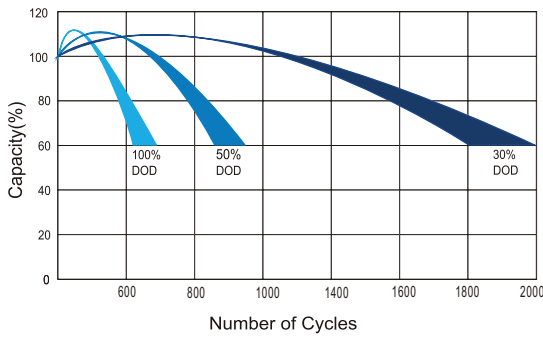
### Discharge Characteristics Curve



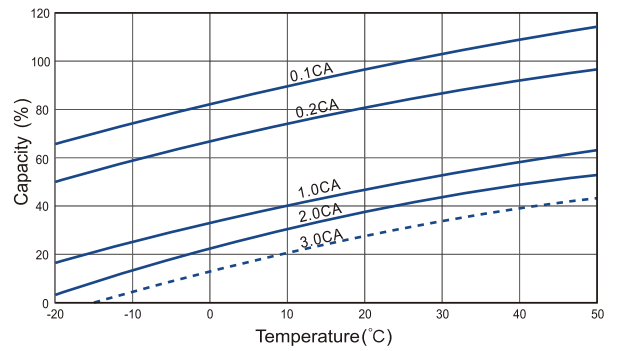
### Charge Characteristic Curve For Standby Use



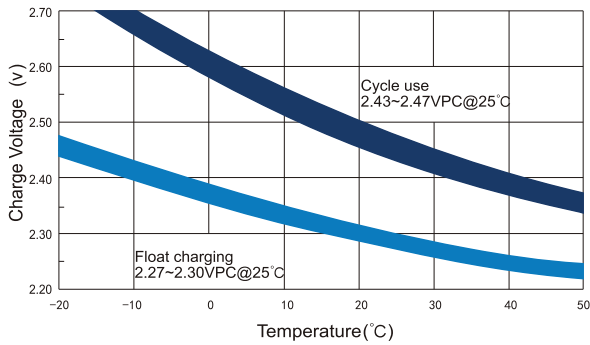
### Cycle Life In Relation To Depth Of Discharge



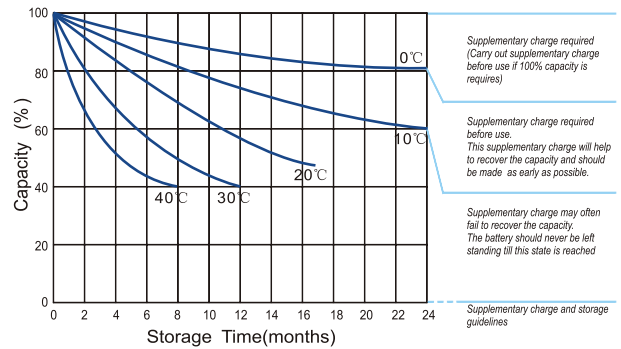
### Temperature Effects On Capacity



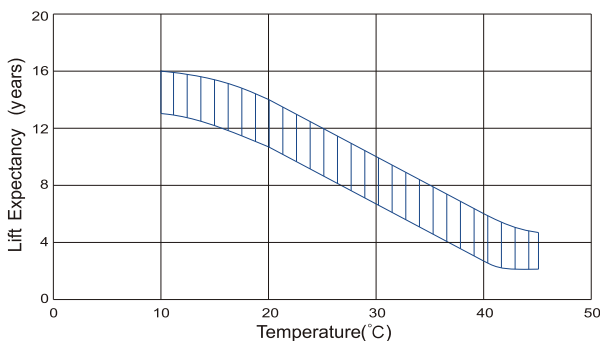
### Relationship Between Charging Voltage And Temperature



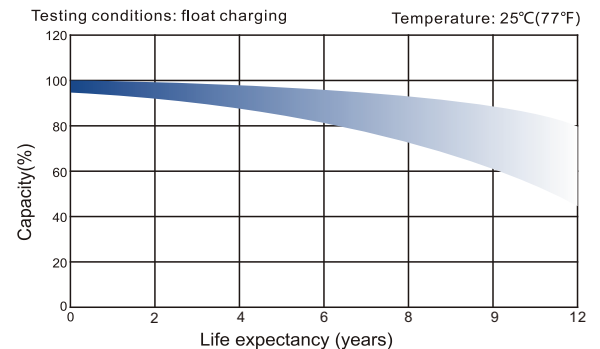
### Storage Characteristics



### Effect Of Temperature On Long Term Life



### Life Characteristics Of Standby Use



SHENZHEN OFFICE (CHINA)  
Tel: +86-755-2691-9474  
Fax: +86-755-2691-9474

Recognized under CE/IEC and certified by ISO9001,14001

